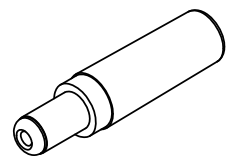
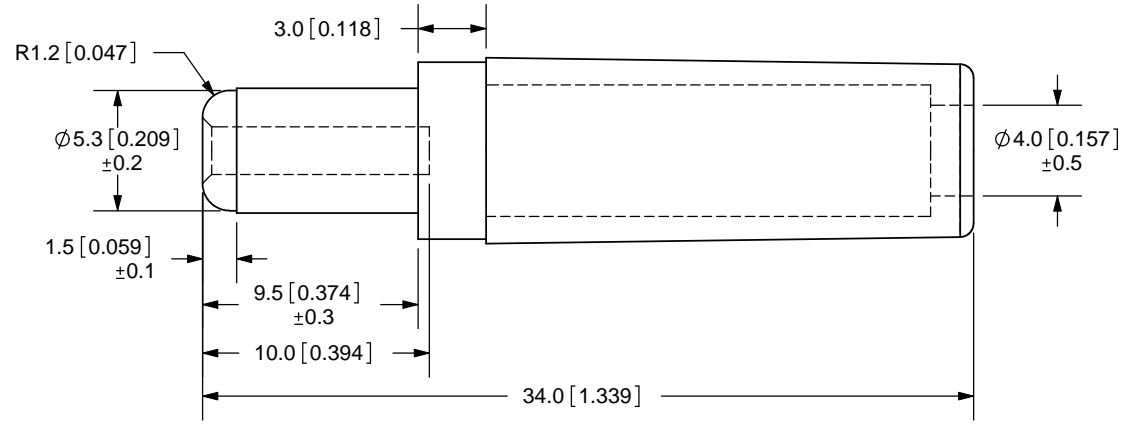
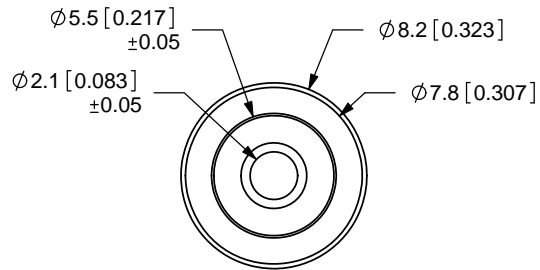


REV.	DESCRIPTION	DATE
A	NEW DRAWING	3/10/2006
B	Added tolerances	8/17/2006
C	Rating change	3/23/2007



SCALE 1:1

TOLERANCE:
±0.2mm UNLESS OTHERWISE
SPECIFIED



SPECIFICATIONS:
RATING: 24V DC @ 5A
OPERATING TEMP: 0° ~ +40°C



20050 SW 112th Ave.
Tualatin, OR 97062
Phone: 503-612-2300
800-275-4899
Fax: 503-612-2383
Website: www.cui.com

PC FILE NAME:
PP3-002A

COPYRIGHT 2009 BY CUI INC.

BARREL	MATERIAL	PLATING	TITLE:	REV:
BARREL	Brass	Nickel	DC PLUG	C
INSULATOR	POM	Black Color	PART NO. PP3-002A	UNITS: MM [INCHES]
HOUSING	ABS		DRAWN BY: ZRJ	APPROVED BY:
				SCALE: 3:1

Mouser Electronics

Authorized Distributor

Click to View Pricing, Inventory, Delivery & Lifecycle Information:

[CUI Inc.:](#)

[PP3-002A](#)